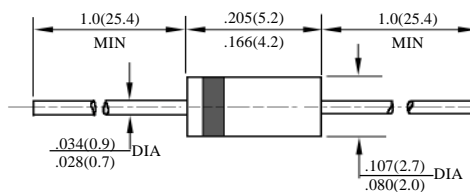


1N4942 – 1N4948

 快速玻璃二极管  
 FAST GPP DIODES

| 型号<br>TYPE | 最大反向<br>峰值电压<br>Maximum<br>Peak Reverse<br>Voltage | 最大平均正向电流<br>Maximum Average<br>Rectified Current<br>@ Half-Wave<br>Resistive Load 60Hz |    | 最大正向浪涌电流<br>Maximum<br>Forward Peak<br>Surge Current @<br>8.3ms Superimposed | 最大反向漏电流<br>Maximum<br>Reverse<br>Current @ PRV<br>@ T <sub>A</sub> =25°C | 最大正向电压<br>Maximum<br>Forward<br>Voltage<br>@ T <sub>A</sub> =25°C |                                    | 最大反向<br>恢复时间<br>Maximum<br>Reverse<br>Recovery Time | 外型尺寸<br>Package<br>Dimensions |
|------------|--|--|----|--|--|---|------------------------------------|---|-------------------------------|
|            | PRV<br>V <sub>PK</sub>                             | I <sub>O</sub> @ T <sub>L</sub><br>A <sub>AV</sub>                                     | °C | I <sub>FM</sub> (Surge)<br>A <sub>PK</sub>                                   | I <sub>R</sub><br>μA <sub>dc</sub>                                       | I <sub>FM</sub><br>A <sub>PK</sub>                                | V <sub>FM</sub><br>V <sub>PK</sub> | T <sub>rr</sub><br>ns                               |                               |
| 1N4942     | 200  | 1.0  | 75 | 25   | 5.0  | 1.0   | 1.3                                | 150   | DO-41                         |
| 1N4944     | 400  |  |    |  |  |   |                                    | 150   |                               |
| 1N4946     | 600  |  |    |  |  |   |                                    | 250   |                               |
| 1N4947     | 800  |  |    |  |  |   |                                    | 250   |                               |
| 1N4948     | 1000   |  |    |  |  |   |                                    | 500   |                               |

 T<sub>rr</sub>测试条件: I<sub>F</sub> = 0.5A, I<sub>R</sub> = 1.0A, I<sub>RR</sub> = 0.25A

 T<sub>rr</sub> Test Conditions: I<sub>F</sub> = 0.5A, I<sub>R</sub> = 1.0A, I<sub>RR</sub> = 0.25A


DO - 41

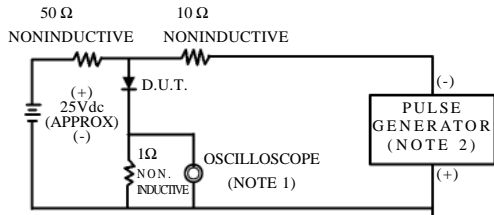
zakazplat.ru

# 1N4942-1N4948

## 快速 GPP 二极管额定值与特性曲线

## RATING & CHARACTERISTIC CURVES OF FAST GPP DIODE

FIG.1-TEST CIRCUIT DIAGRAM AND REVERSE RECOVERY TIME CHARACTERISTIC



NOTES: 1. Rise Time=7ns max.  
Input Impedance=1megohm.22pF.  
2. Rise Time=10ns max.  
Source Impedance=50 ohms.

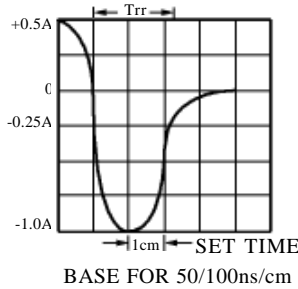


FIG. 2 – TYPICAL FORWARD CURRENT DERATING CURVE

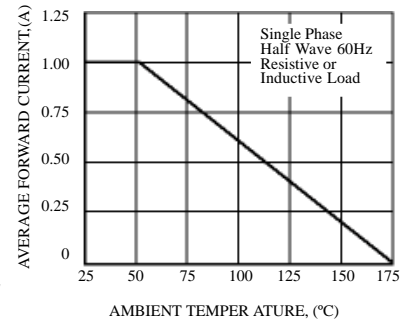


FIG. 3 – TYPICAL REVERSE CHARACTERISTICS

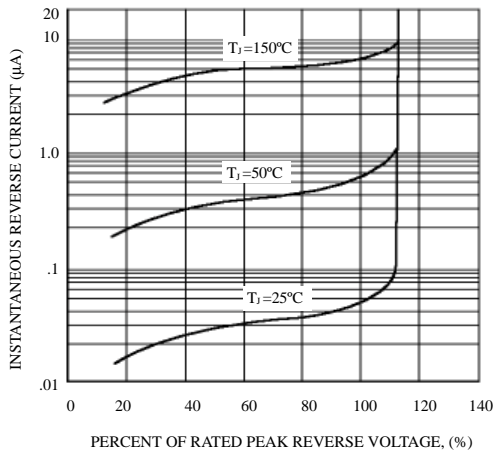


FIG. 4 – TYPICAL INSTANTANEOUS FORWARD CHARACTERISTICS

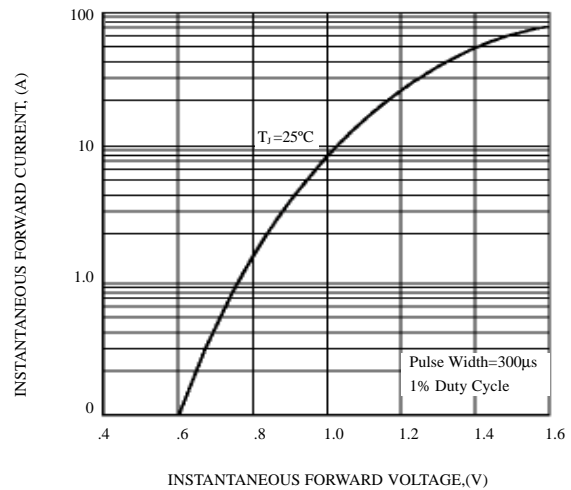


FIG. 5 – MAXIMUM NON-REPETITIVE FOWARD SURGE CURRENT

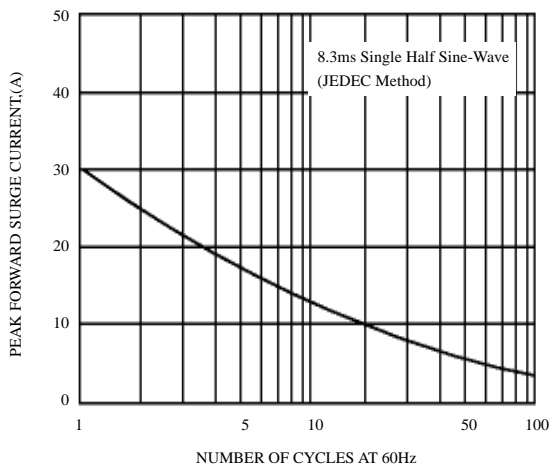


FIG. 6 – TYPICAL JUNCTION CAPACITANCE

